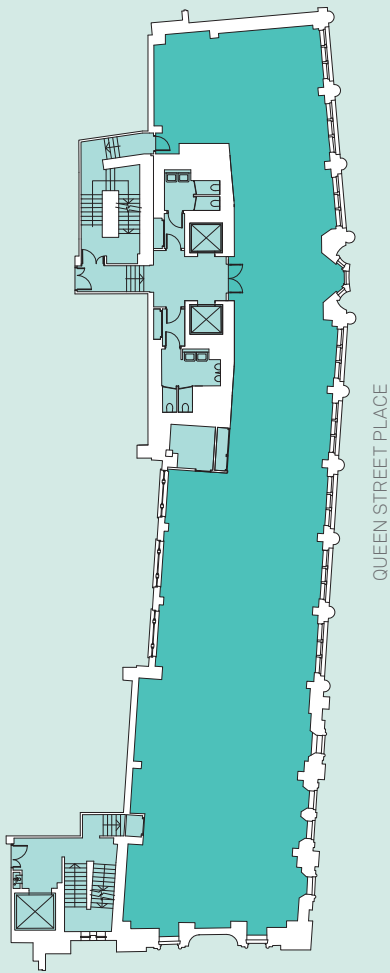




VINTNERS PLACE  
LONDON

**4,613 Sq Ft Available Office Space, 4th Floor – East Wing**  
**THAMES HOUSE, VINTNERS PLACE**

UPPER THAMES STREET



QUEEN STREET PLACE

Floor plan not to scale.

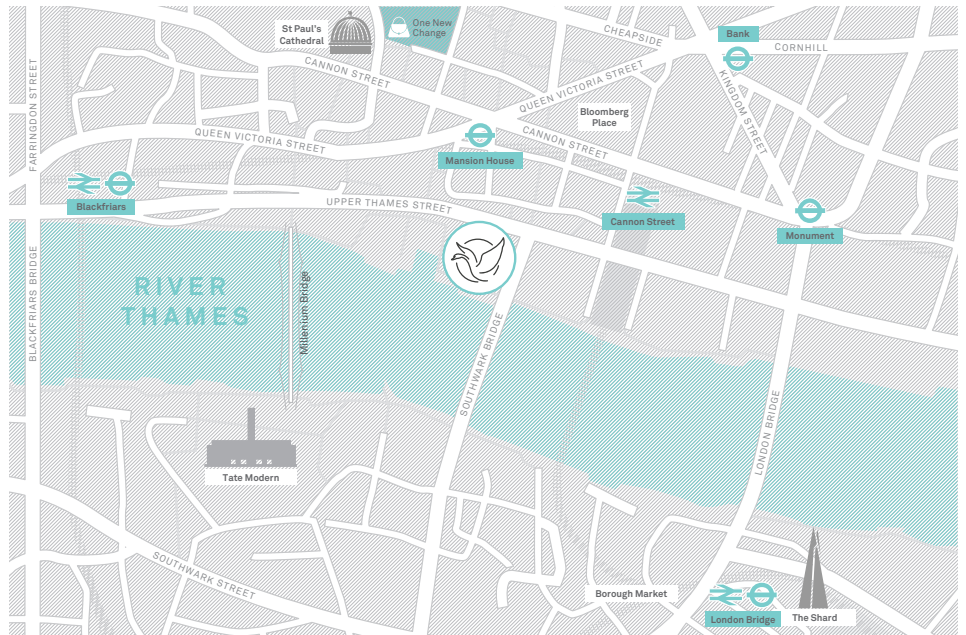
## Fourth Floor 4,613 sq ft

### Specification:

- New Cat A Refurbished Floor
- New 150mm Raised Floor
- New Metal Tiled Suspended Ceiling
- New VRF Air Conditioning
- New LED Lighting
- 1:10 Occupational Density
- 2x 13 Person Passenger Lifts
- 3x Goods Lifts
- Shower and Changing Facilities
- Bike Racks

### Vintners Place Amenities:

- Newly Refurbished Atrium
- 24-Hour Access and Security
- Nuffield Health Club and Gym
- 20m Swimming Pool
- Café Serving Fine Coffee and Pastries



**BH<sub>2</sub>**  
020 7600 5000

**CUSHMAN & WAKEFIELD**  
020 3296 3000



[www.vintnersplace.com](http://www.vintnersplace.com)

**CRESCENT HEIGHTS**

Cushman and Wakefield LLP and GM Real Estate Limited give notice that (i) The particulars are set out as a general outline only for the intended guidance of intended purchasers or lessees, and do not constitute any part of an offer or contract; (ii) All descriptions, dimensions, reference to condition and necessary permissions for use and occupation, and other details are given without responsibility and any intending purchasers or tenants should not rely on them as statements or representations of fact but must satisfy themselves by inspection or otherwise as to the correctness of each of them; (iii) No person in the employment of Cushman and Wakefield LLP and GM Real Estate has any authority to make any representation or warranty whatever in relation to this property; (iv) All plans contained in this brochure are indicative only and may require modifications to the building design. July 2018.